



TABLE OF ORGANIZATION

Approved Board of Trustees: November 20, 2024

CARROLL COMMUNITY COLLEGE

Board of Trustees

President

Dr. Rosalie Mince

Executive Associate to the President

Lauren Walker

Vice President,
Academic and Student
Affairs and Dean of
Faculty

Dr. Kristie Crumley

Vice President,
Workforce, Business
and Community
Education

Dr. Kelly Koermer

Vice President,
Effectiveness, Integrity,
and Accountability

Dr. Michelle Kloss

Vice President
of Administrative
Services

Patricia Davis

Chief Communications
and Public Relations
Officer

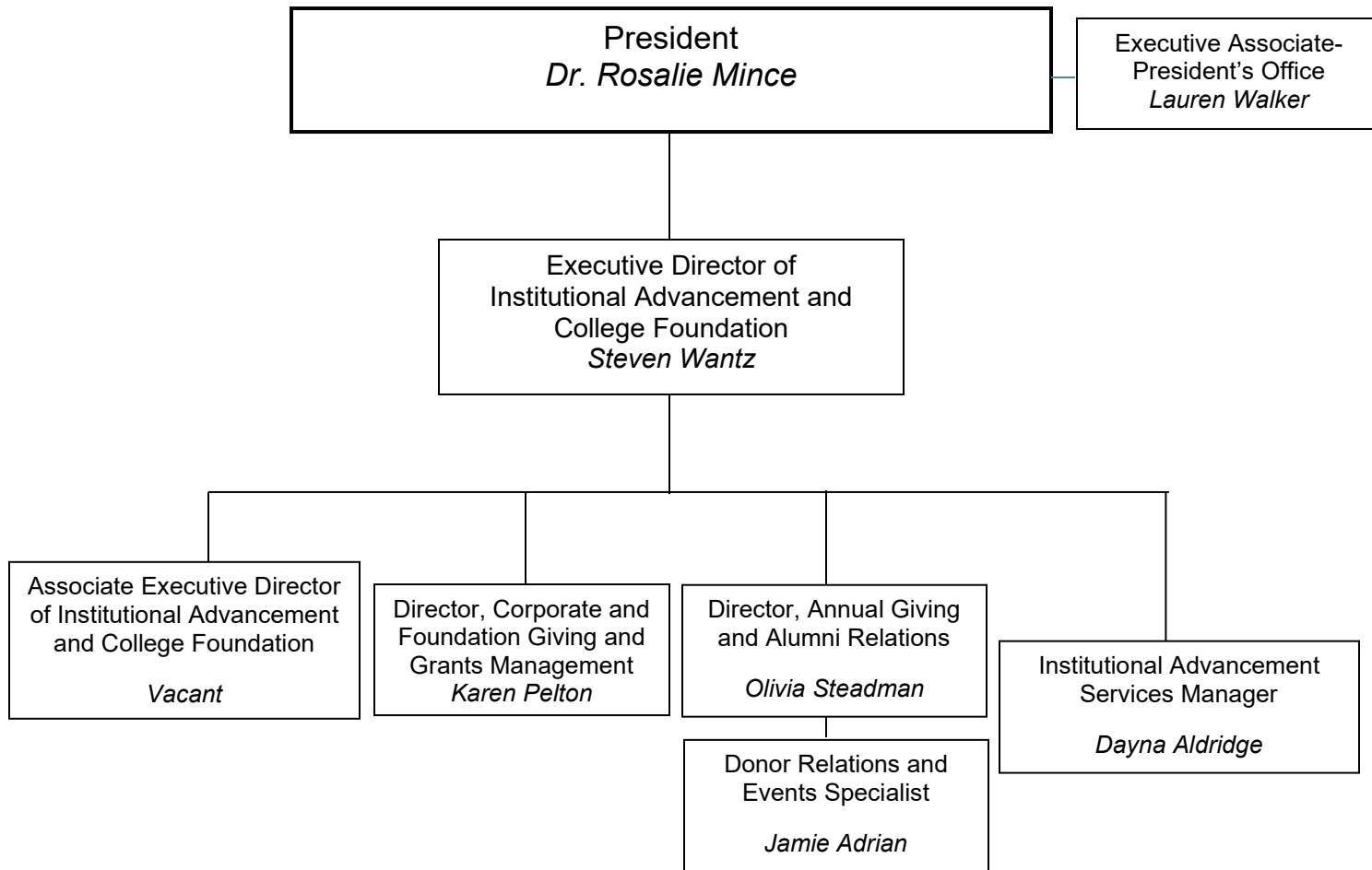
Lisa Slappy

Executive Director,
Diversity, Equity, Inclusion
and Belonging
Clyde Johnson

Executive Director of Institutional
Advancement and College
Foundation
Steven Wantz

Administrative
Specialist
Lynda Swanson

INSTITUTIONAL ADVANCEMENT AND COLLEGE FOUNDATION



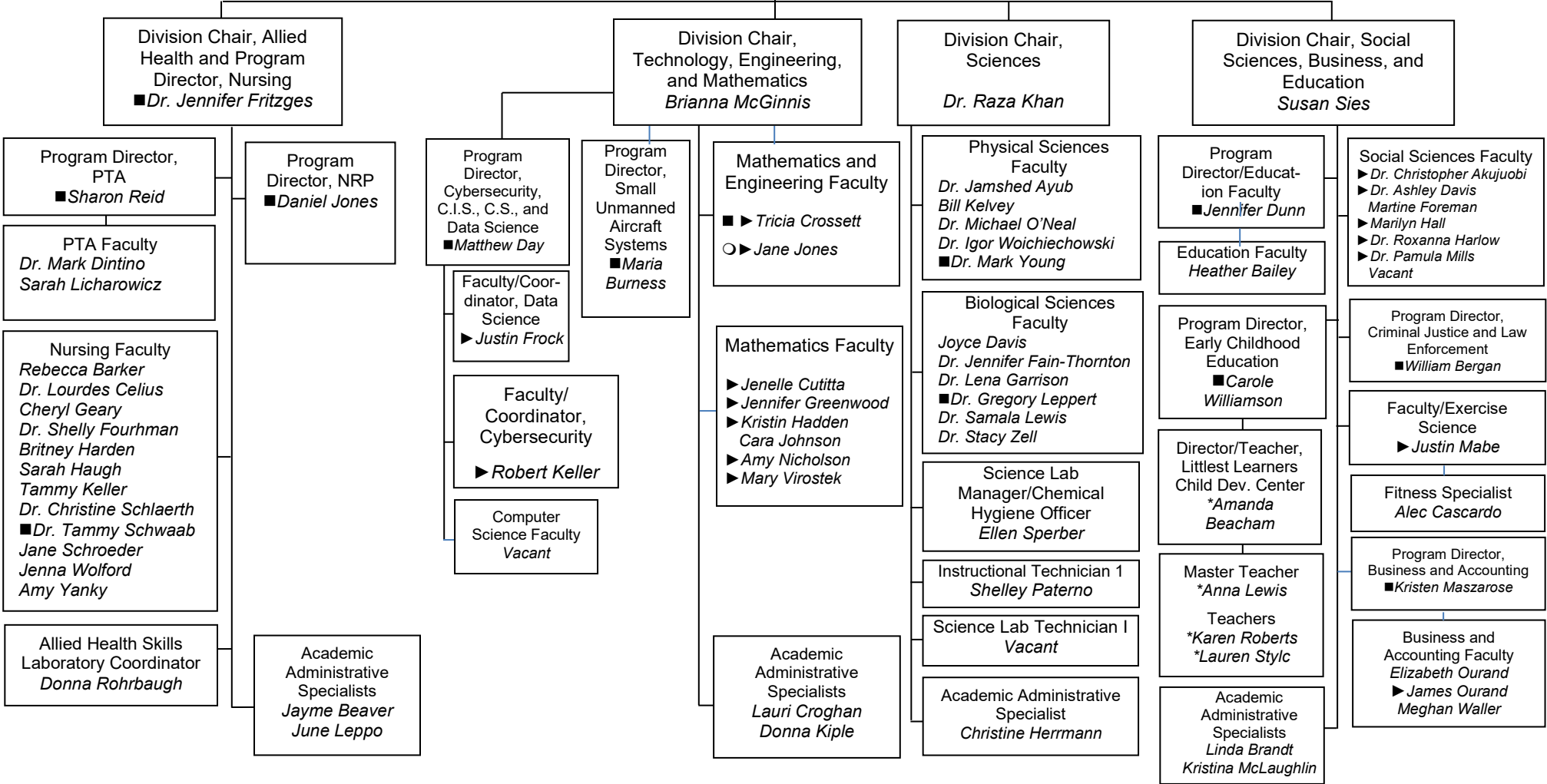
ACADEMIC AFFAIRS

Faculty/Staff Designations:

- ▶ Coordinator
- Auxiliary
- Program Director
- ◆ Co-Chair
- ★ Assistant Chair
- STEM Scholars Program Coordinator
- *Grant Position

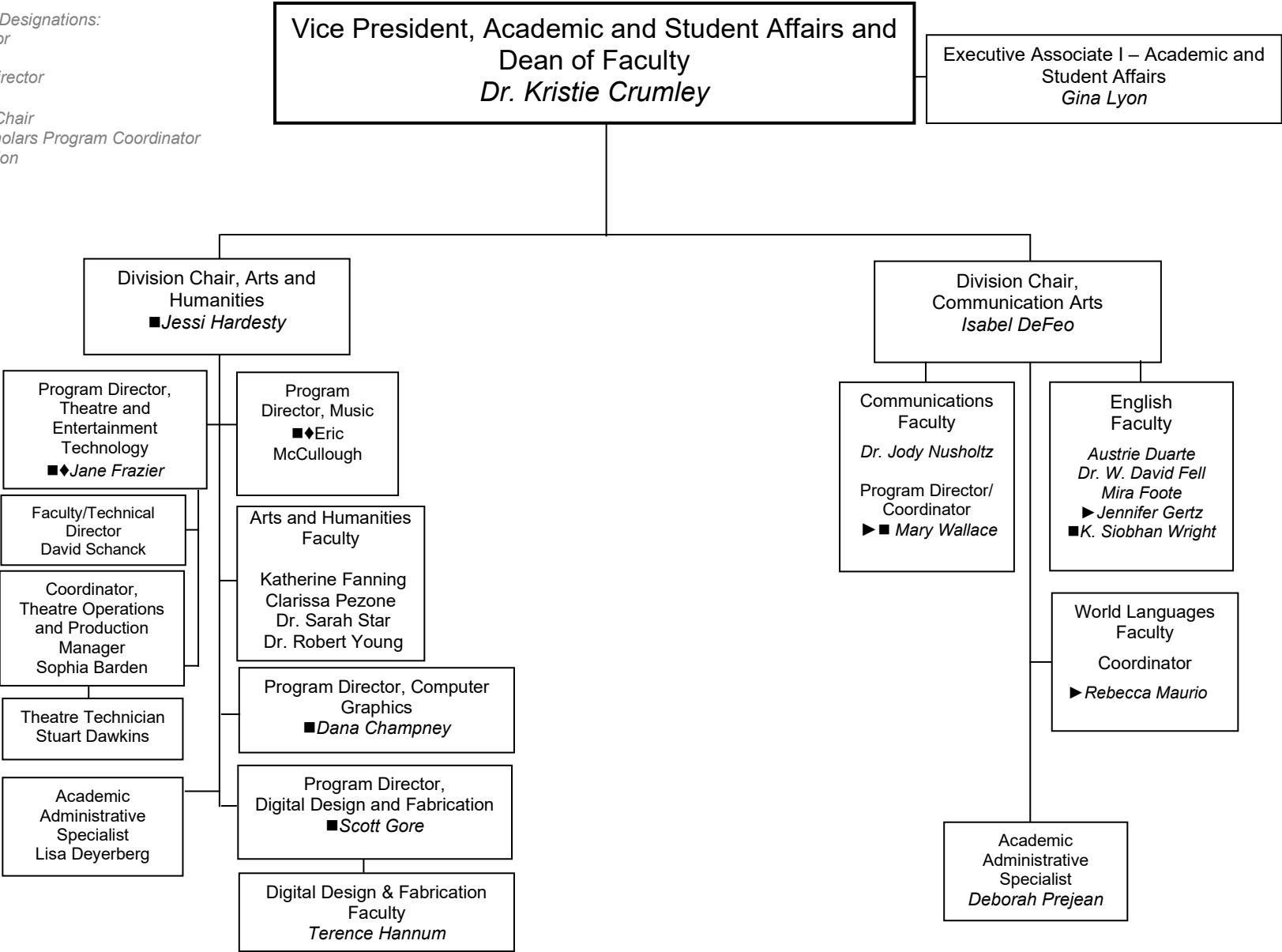
Vice President, Academic and Student Affairs and
Dean of Faculty
Dr. Kristie Crumley

Executive Associate I – Academic and
Student Affairs
Gina Lyon

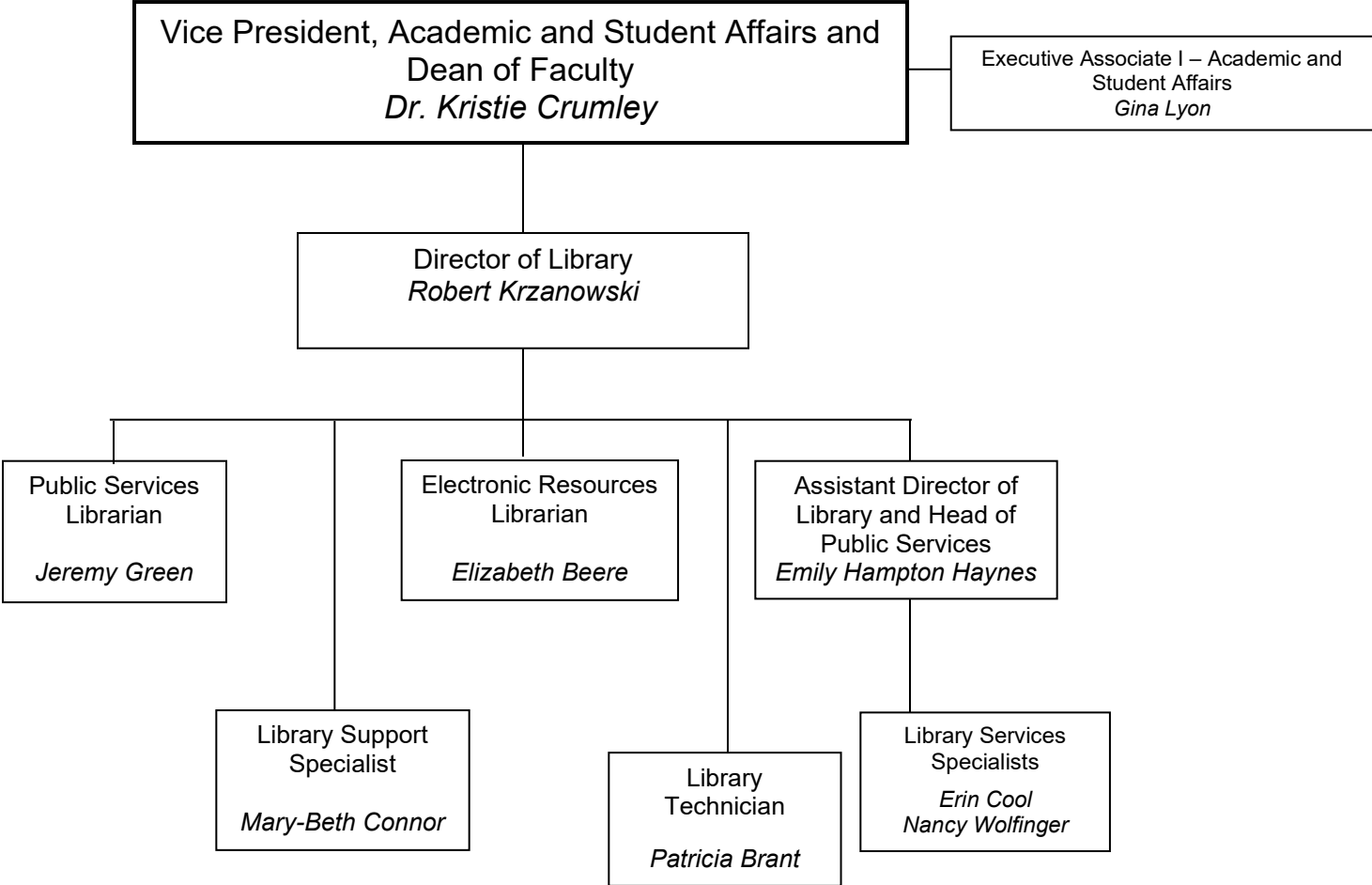


ACADEMIC AFFAIRS

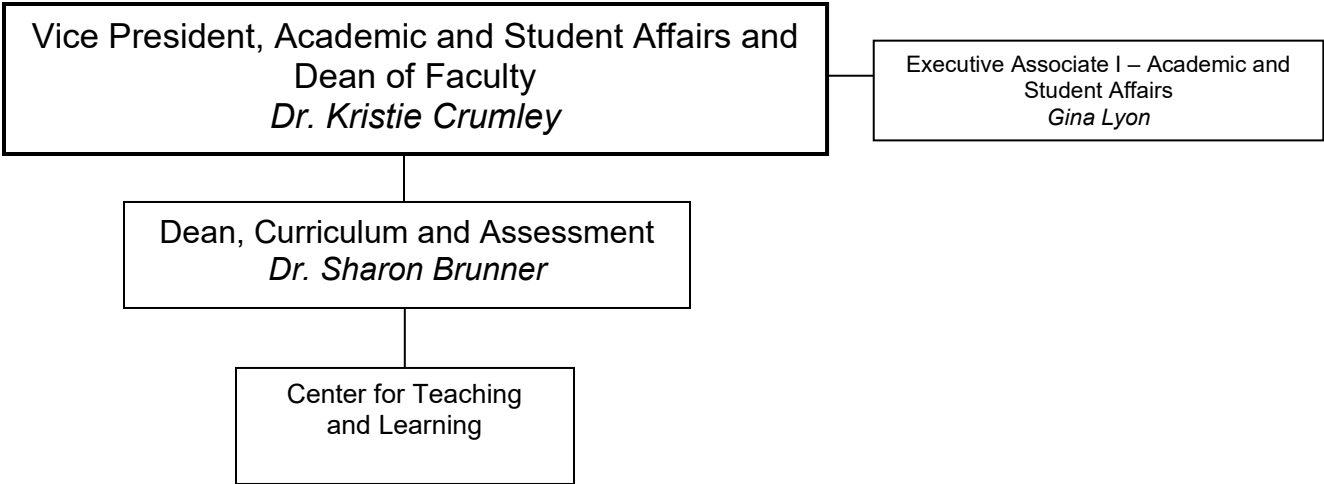
- Faculty/Staff Designations:
- ▶ Coordinator
 - Auxiliary
 - Program Director
 - ◆ Co-Chair
 - ★ Assistant Chair
 - STEM Scholars Program Coordinator
 - * Grant Position



**ACADEMIC AFFAIRS
LEARNING RESOURCES**



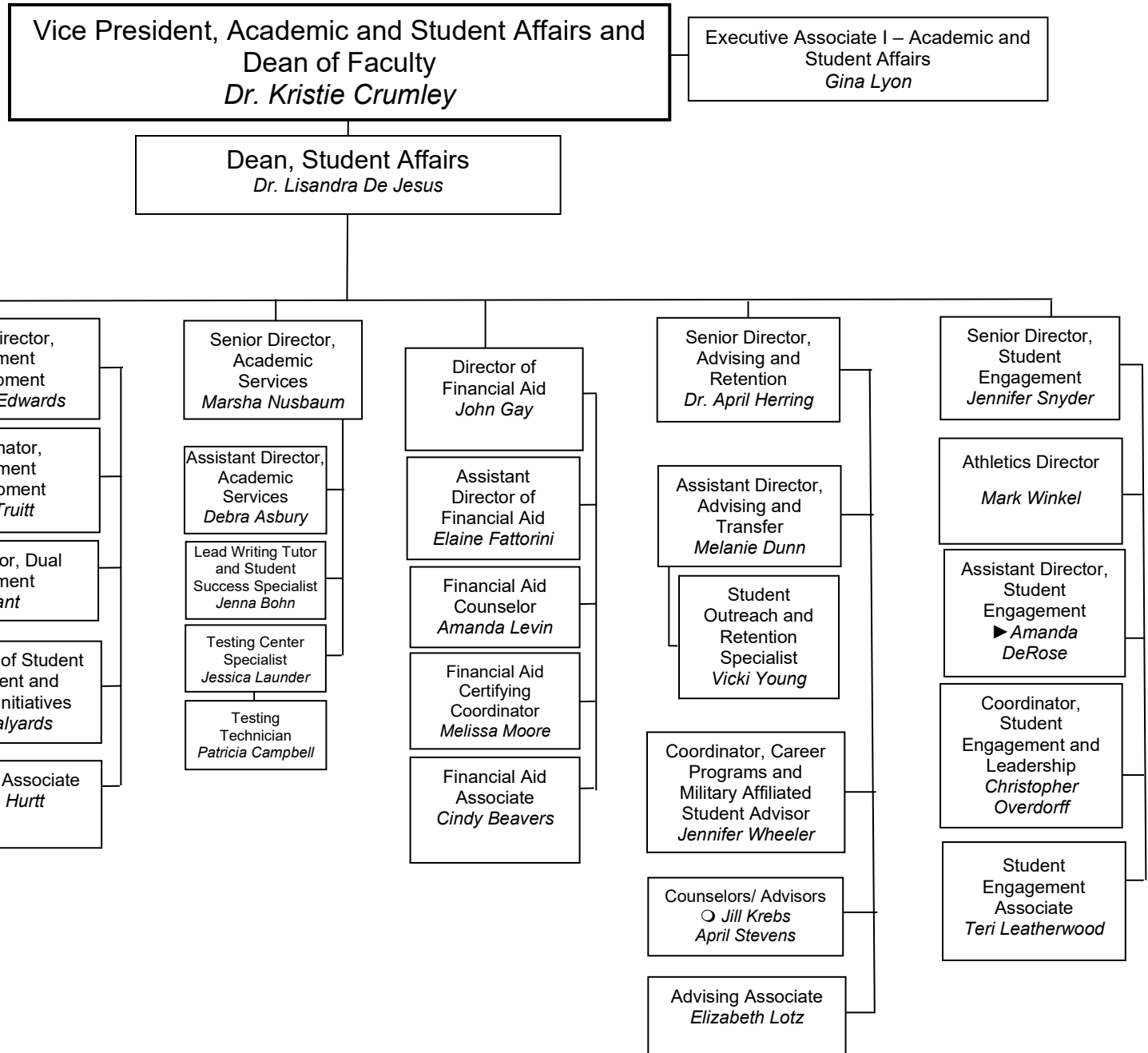
ACADEMIC AFFAIRS



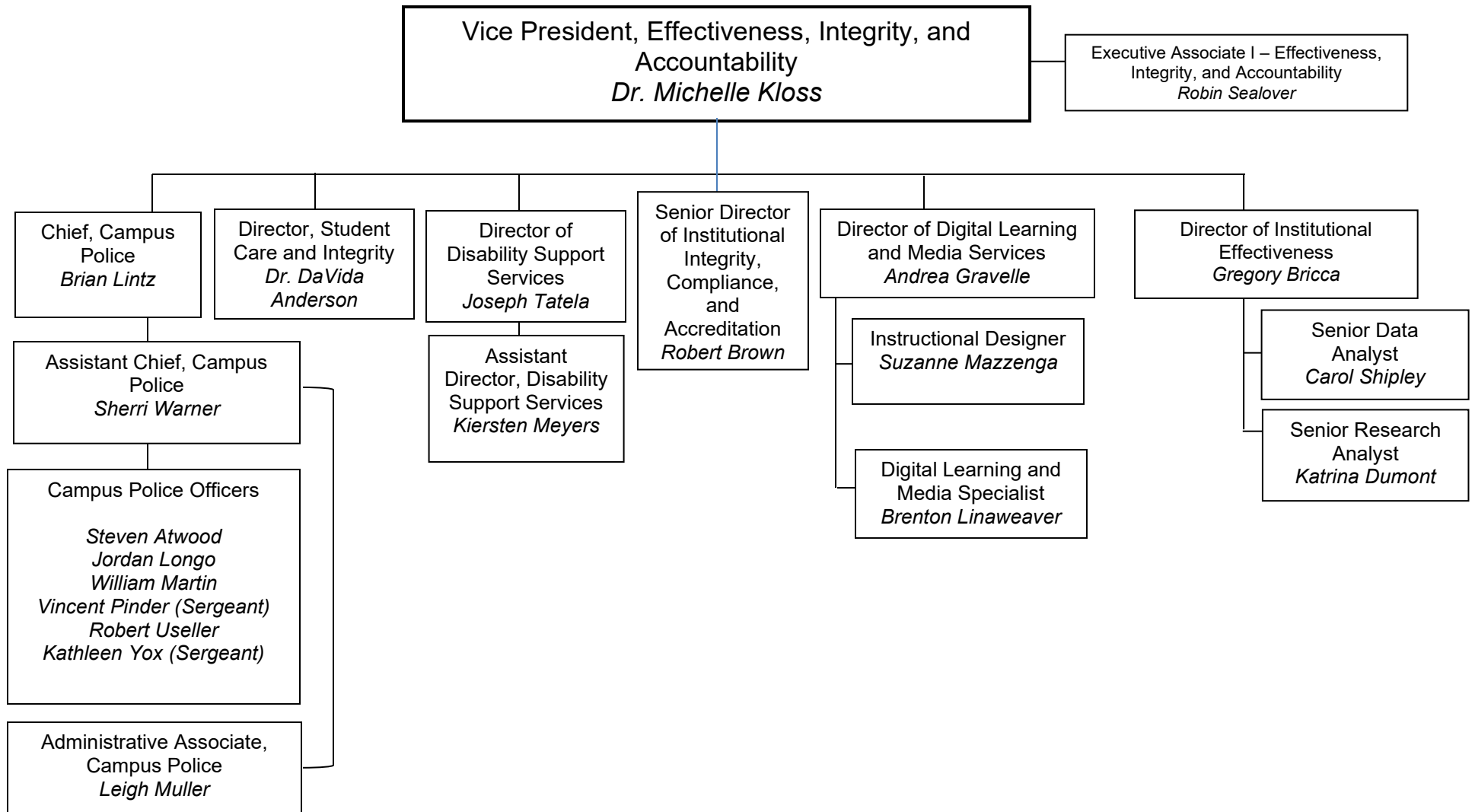
STUDENT AFFAIRS

► Director of Pappalardo Honors Program
(formerly Hill Scholars Program)

○ STEM Scholars Program Coordinator

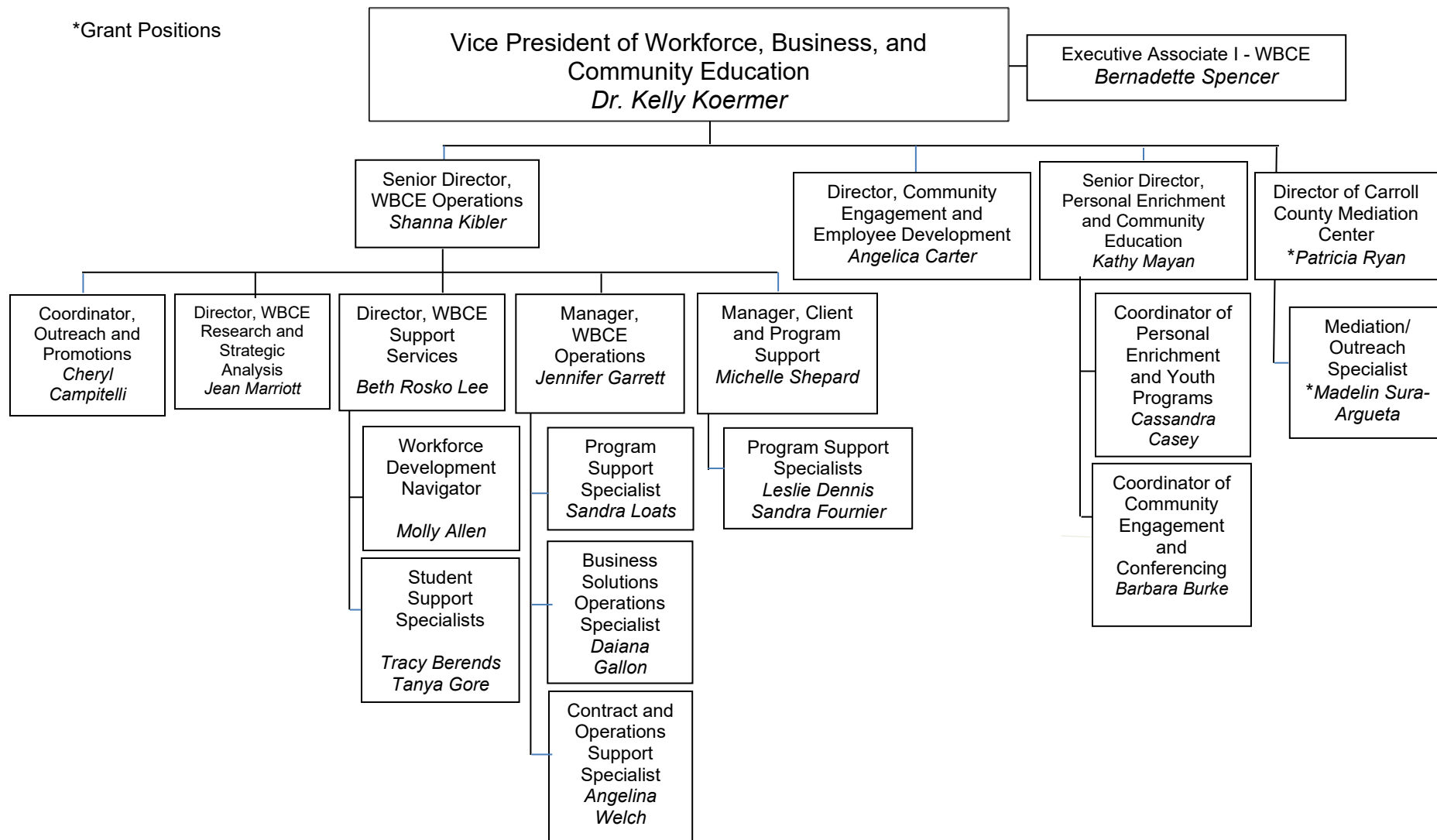


EFFECTIVENESS, INTEGRITY, AND ACCOUNTABILITY



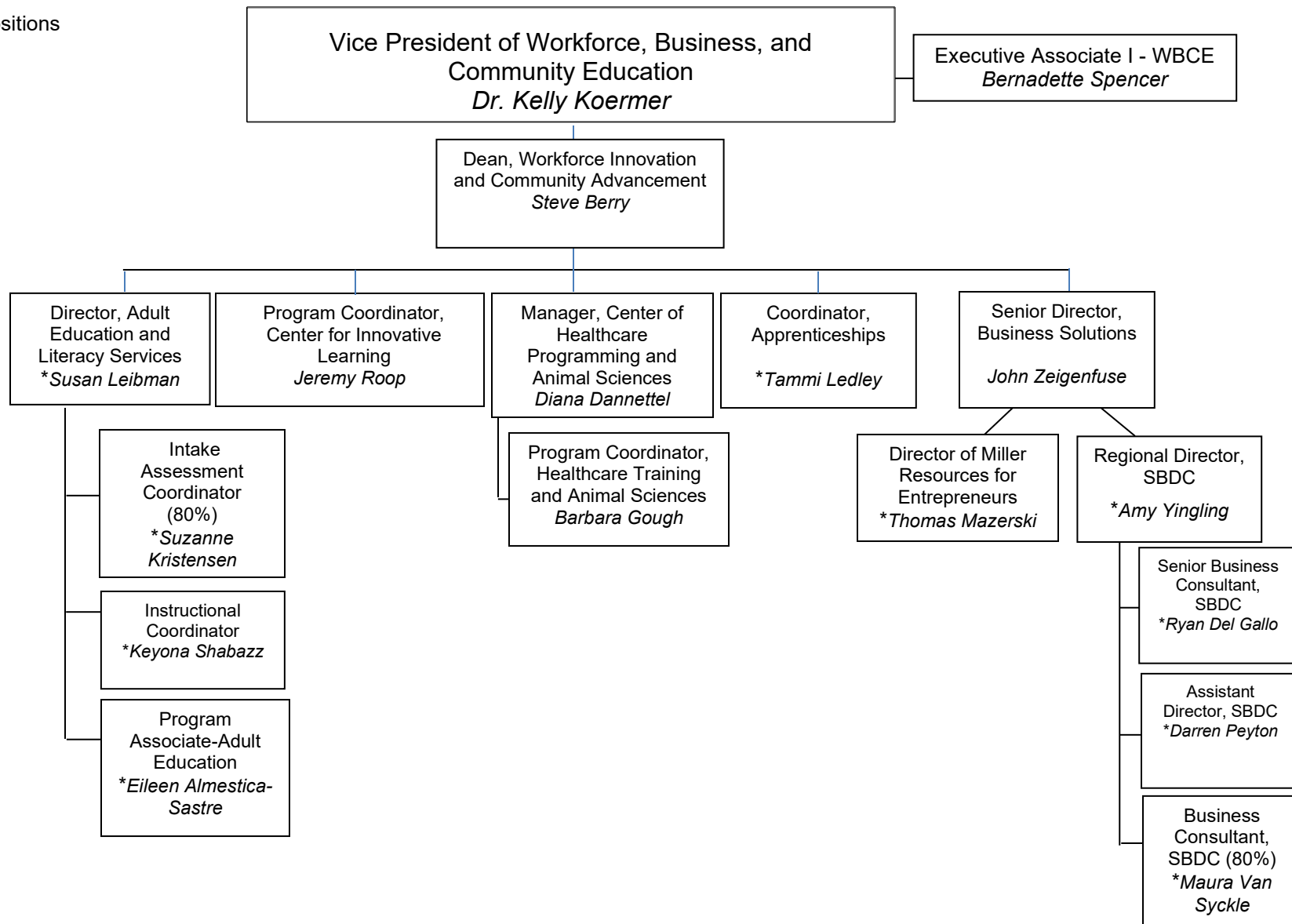
WORKFORCE, BUSINESS, AND COMMUNITY EDUCATION

*Grant Positions

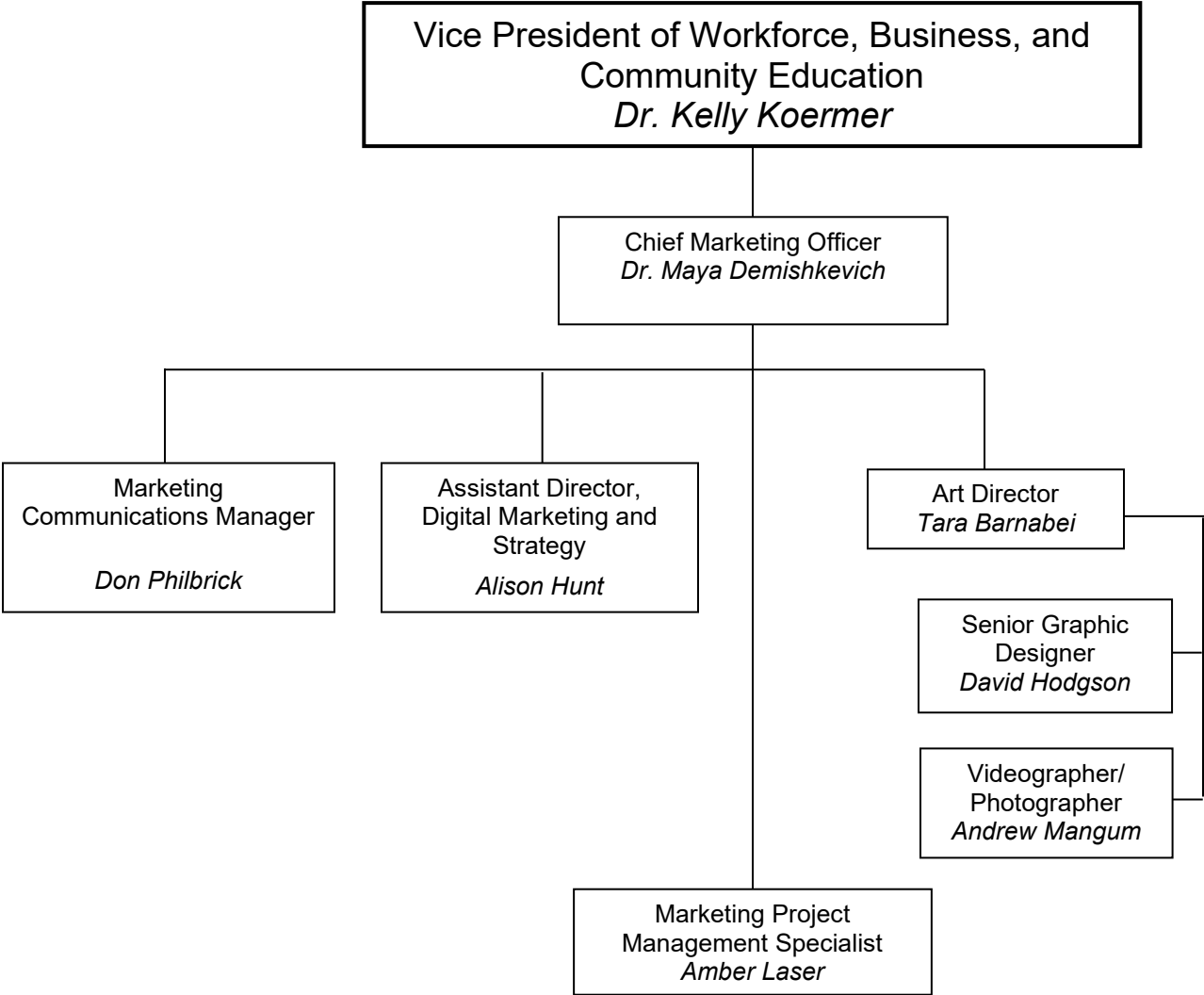


WORKFORCE, BUSINESS, AND COMMUNITY EDUCATION

* Grant Positions

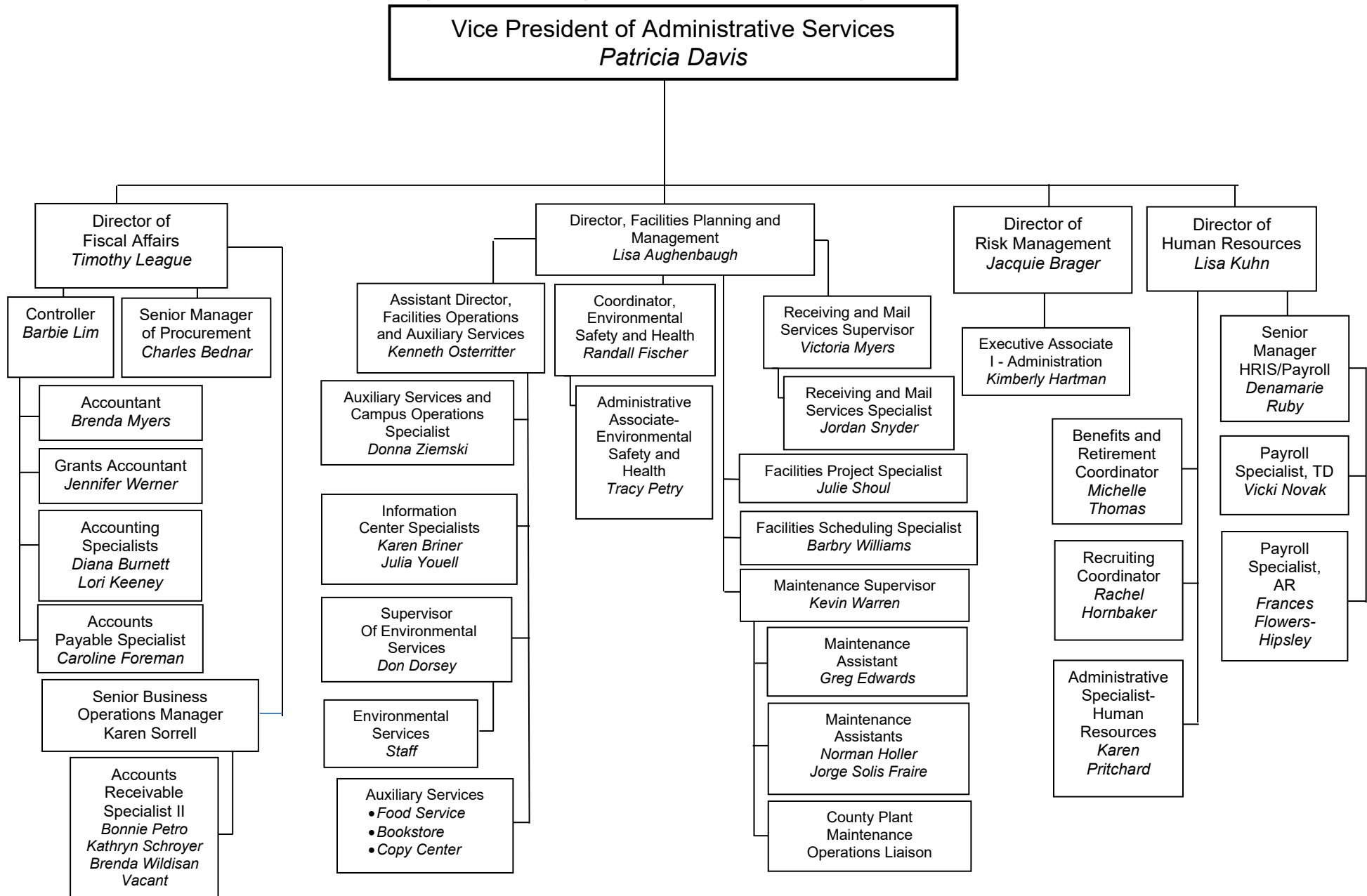


**WORKFORCE, BUSINESS, AND COMMUNITY EDUCATION
STRATEGIC MARKETING AND BRAND MANAGEMENT**

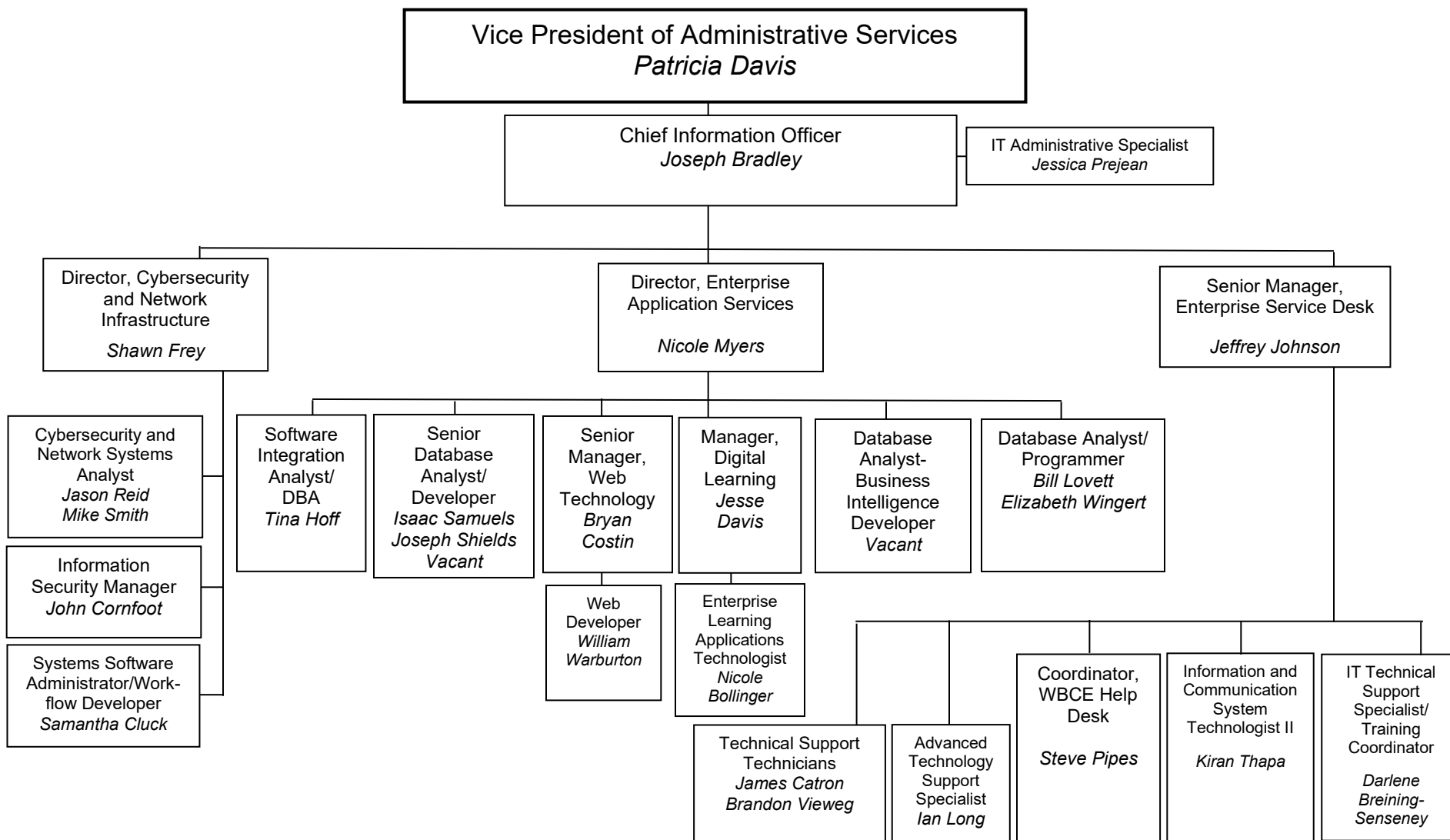


ADMINISTRATION

FISCAL AFFAIRS, FACILITIES, RISK MANAGEMENT, HUMAN RESOURCES



ADMINISTRATION: NETWORK AND TECHNOLOGY SERVICES



ADMINISTRATION: ENVIRONMENTAL SERVICES

