



TABLE OF ORGANIZATION

Approved Board of Trustees: December 18, 2024

CARROLL COMMUNITY COLLEGE

Board of Trustees

President
Dr. Rosalie Mince

Executive Associate to the
President
Lauren Walker

Vice President,
Academic and Student
Affairs and Dean of
Faculty
Dr. Kristie Crumley

Vice President,
Workforce, Business
and Community
Education
Dr. Kelly Koermer

Vice President,
Effectiveness, Integrity,
and Accountability
Dr. Michelle Kloss

Vice President
of Administrative
Services
Patricia Davis

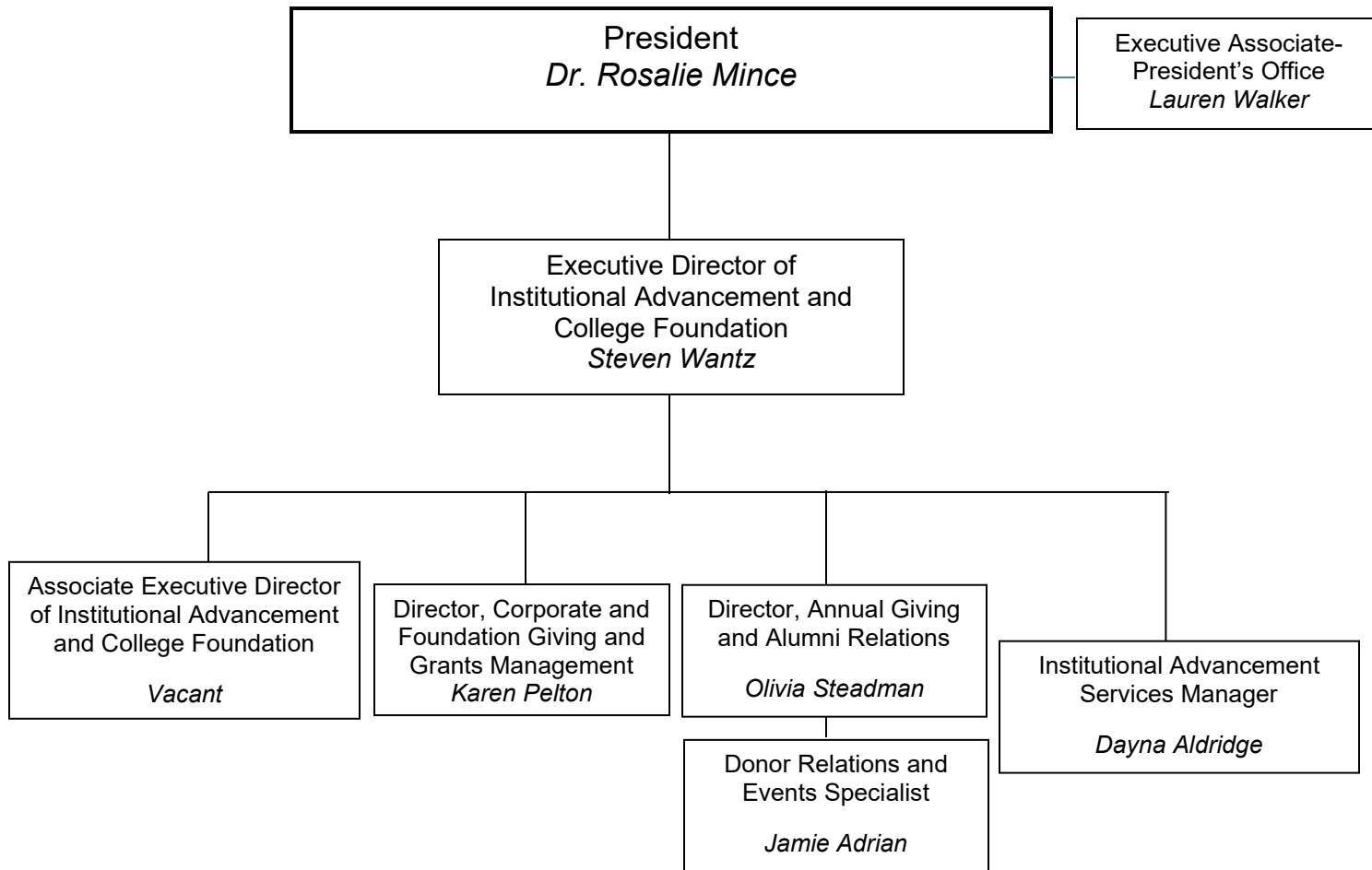
Chief Communications
and Public Relations
Officer
Lisa Slappy

Executive Director,
Diversity, Equity, Inclusion
and Belonging
Clyde Johnson

Executive Director of Institutional
Advancement and College
Foundation
Steven Wantz

Administrative
Specialist
Lynda Swanson

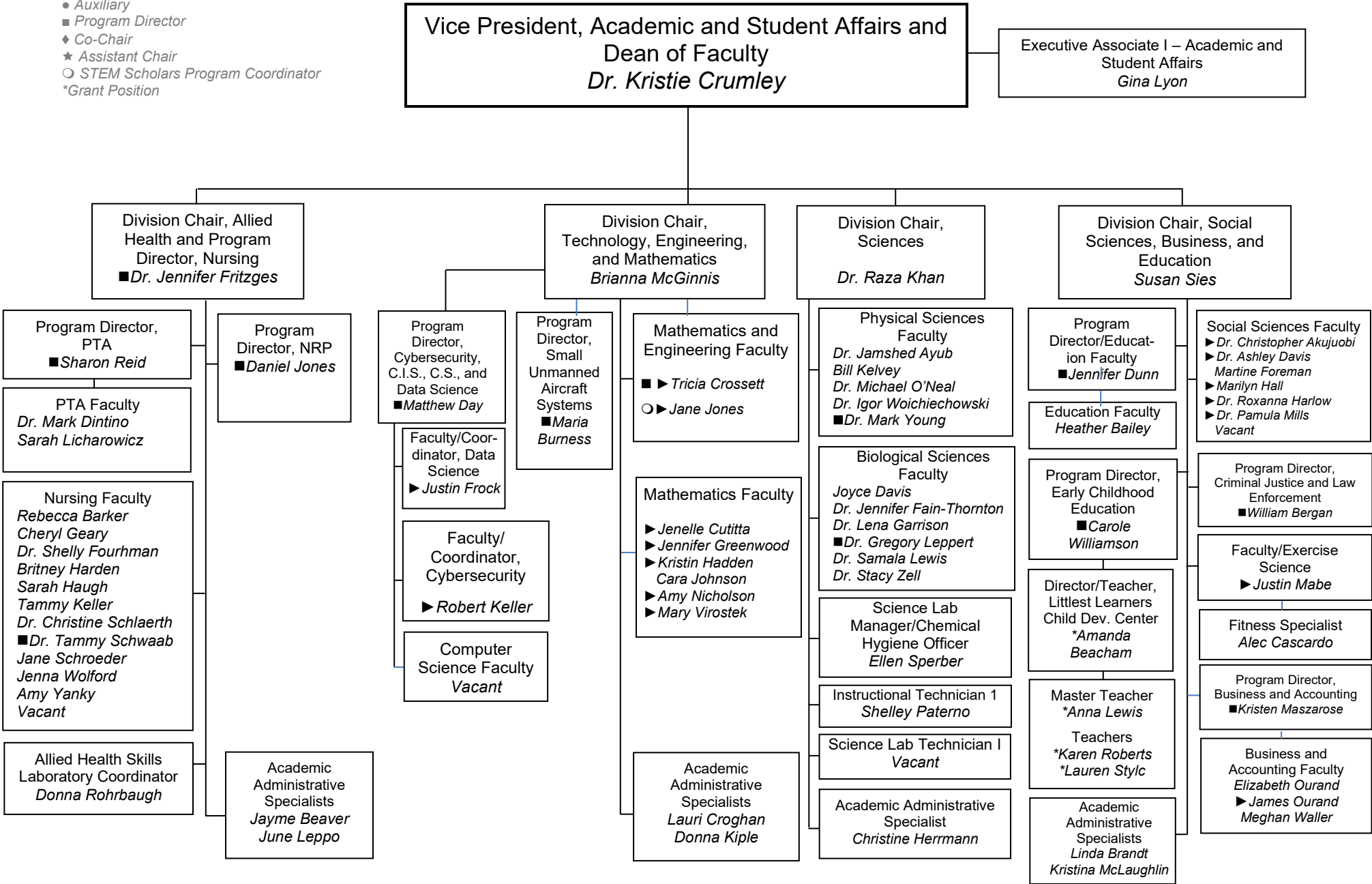
INSTITUTIONAL ADVANCEMENT AND COLLEGE FOUNDATION



ACADEMIC AFFAIRS

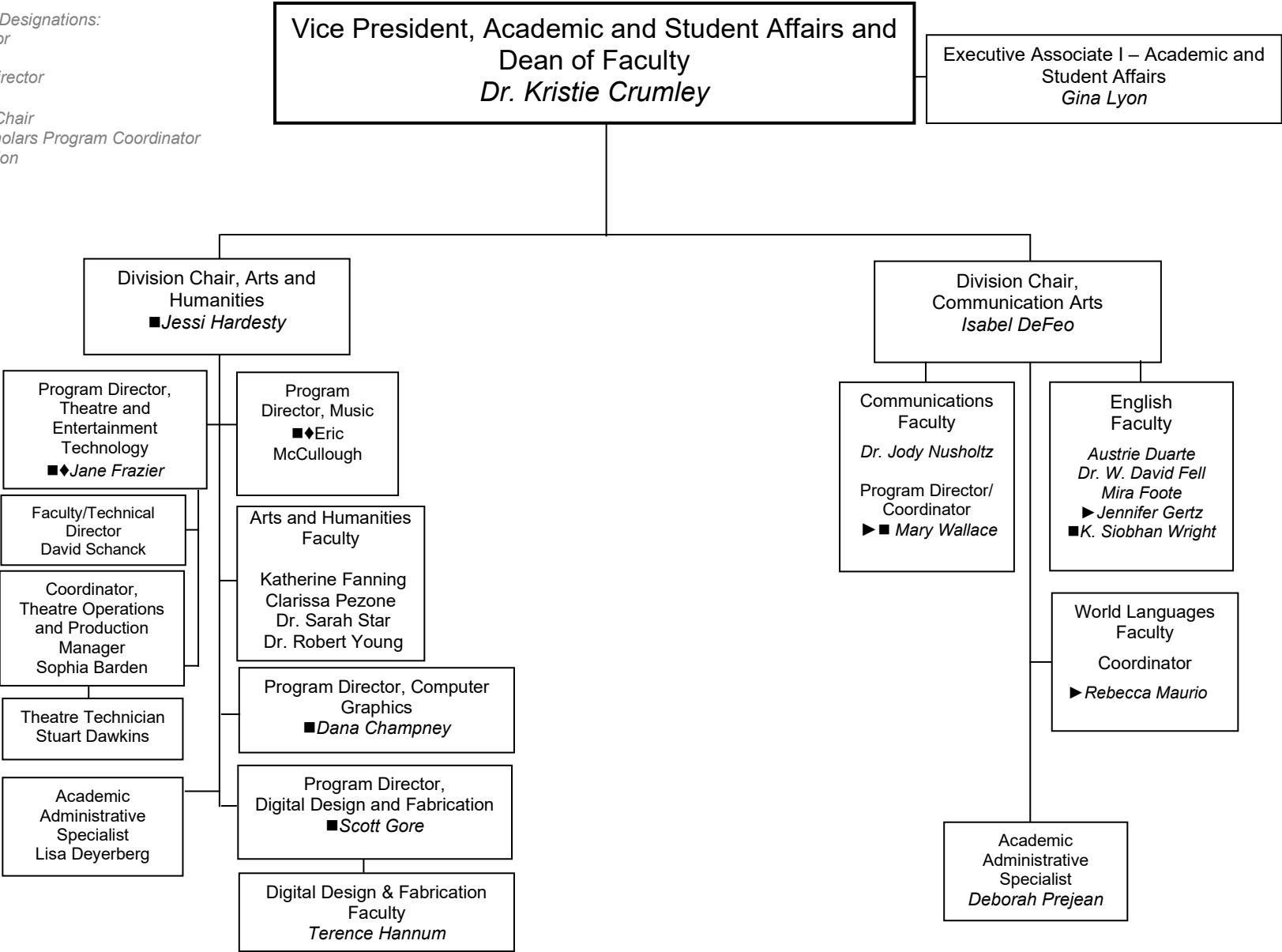
Faculty/Staff Designations:

- ▶ Coordinator
- Auxiliary
- Program Director
- ◆ Co-Chair
- ★ Assistant Chair
- STEM Scholars Program Coordinator
- *Grant Position

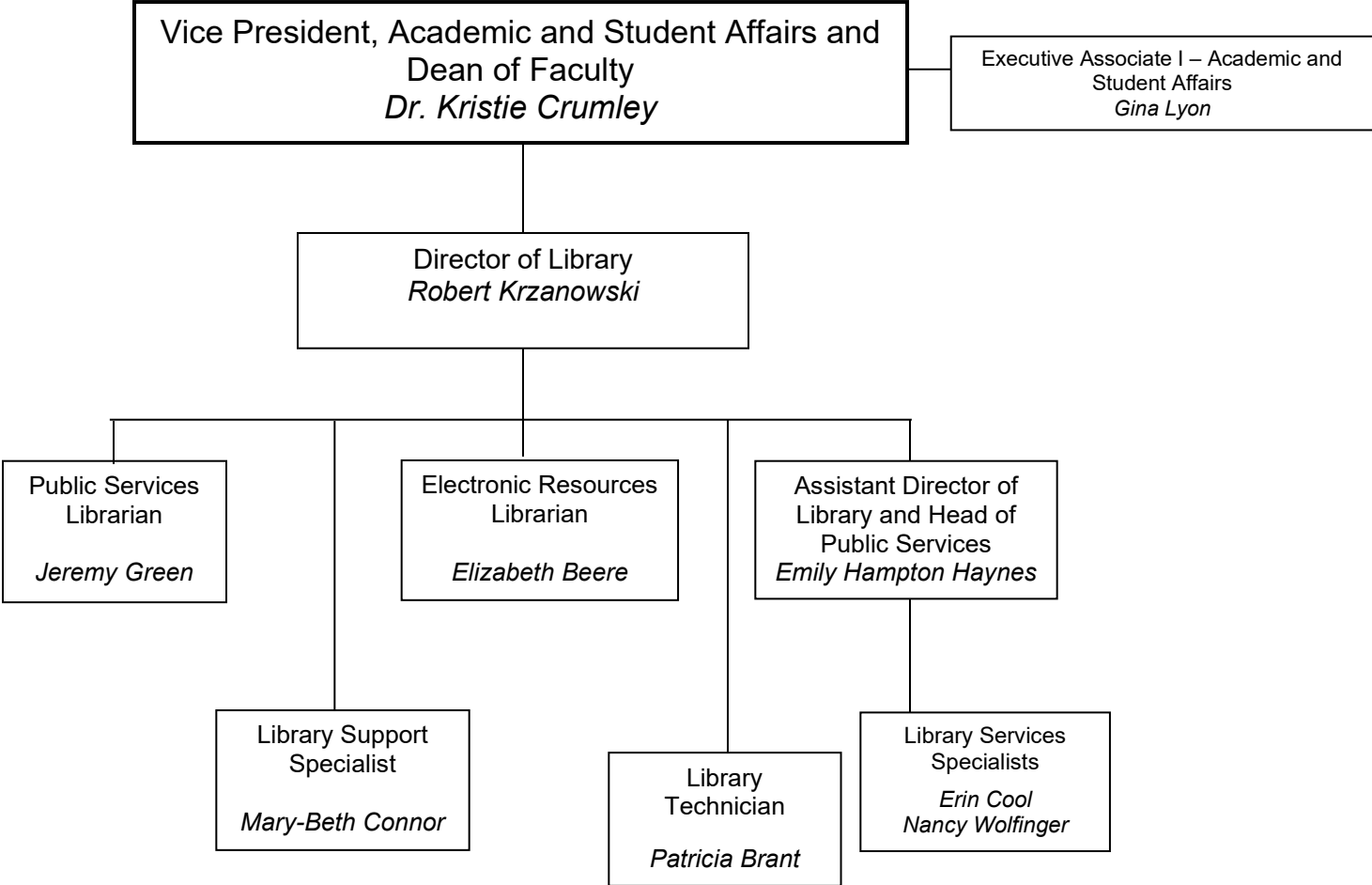


ACADEMIC AFFAIRS

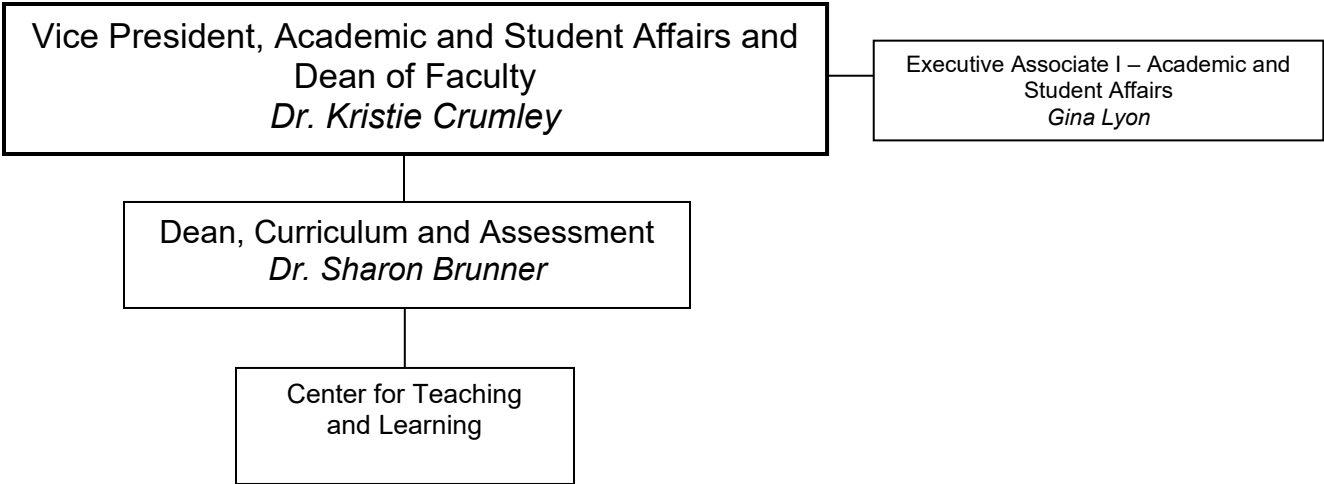
- Faculty/Staff Designations:
- ▶ Coordinator
 - Auxiliary
 - Program Director
 - ◆ Co-Chair
 - ★ Assistant Chair
 - STEM Scholars Program Coordinator
 - * Grant Position



**ACADEMIC AFFAIRS
LEARNING RESOURCES**



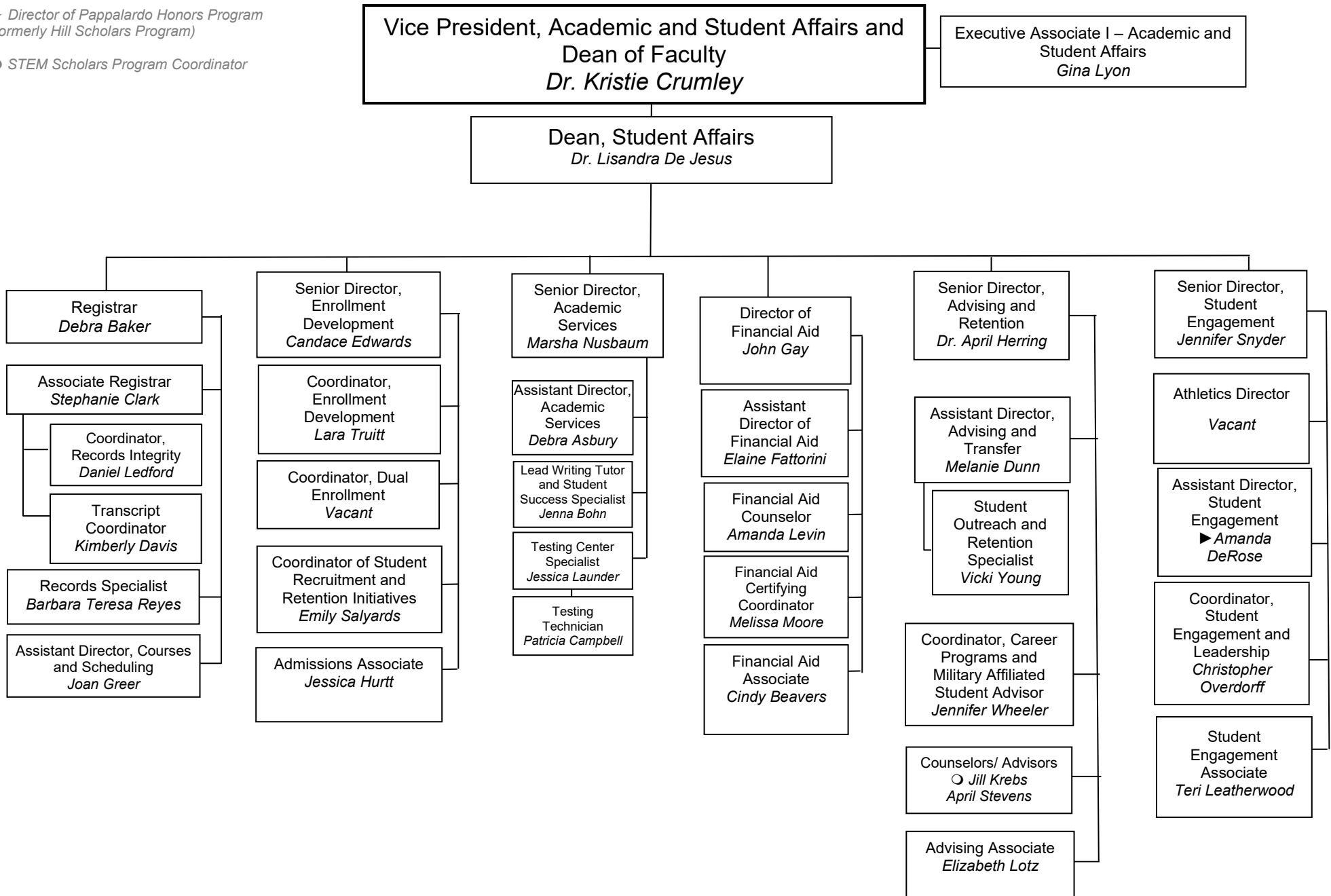
ACADEMIC AFFAIRS



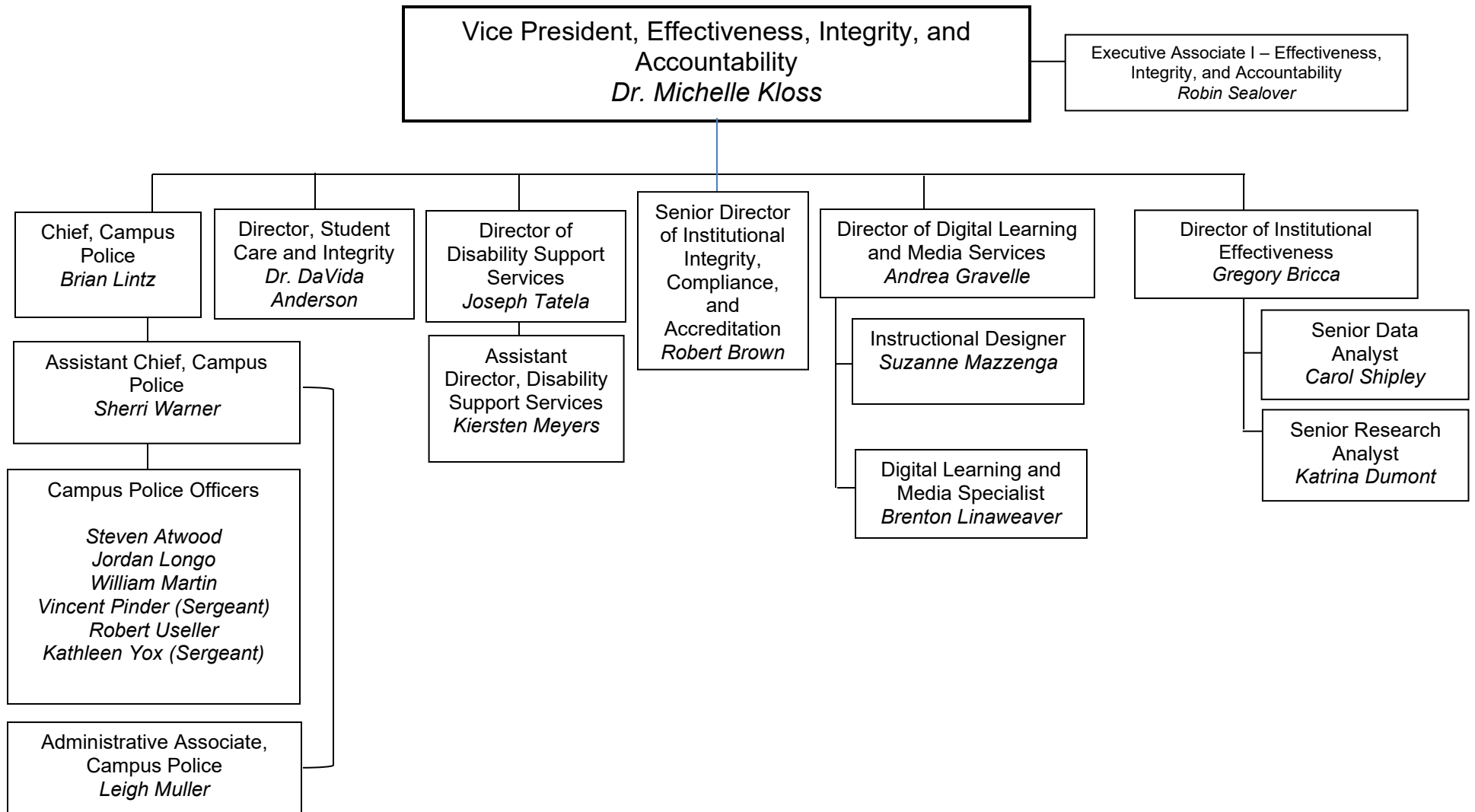
STUDENT AFFAIRS

► Director of Pappalardo Honors Program
(formerly Hill Scholars Program)

○ STEM Scholars Program Coordinator

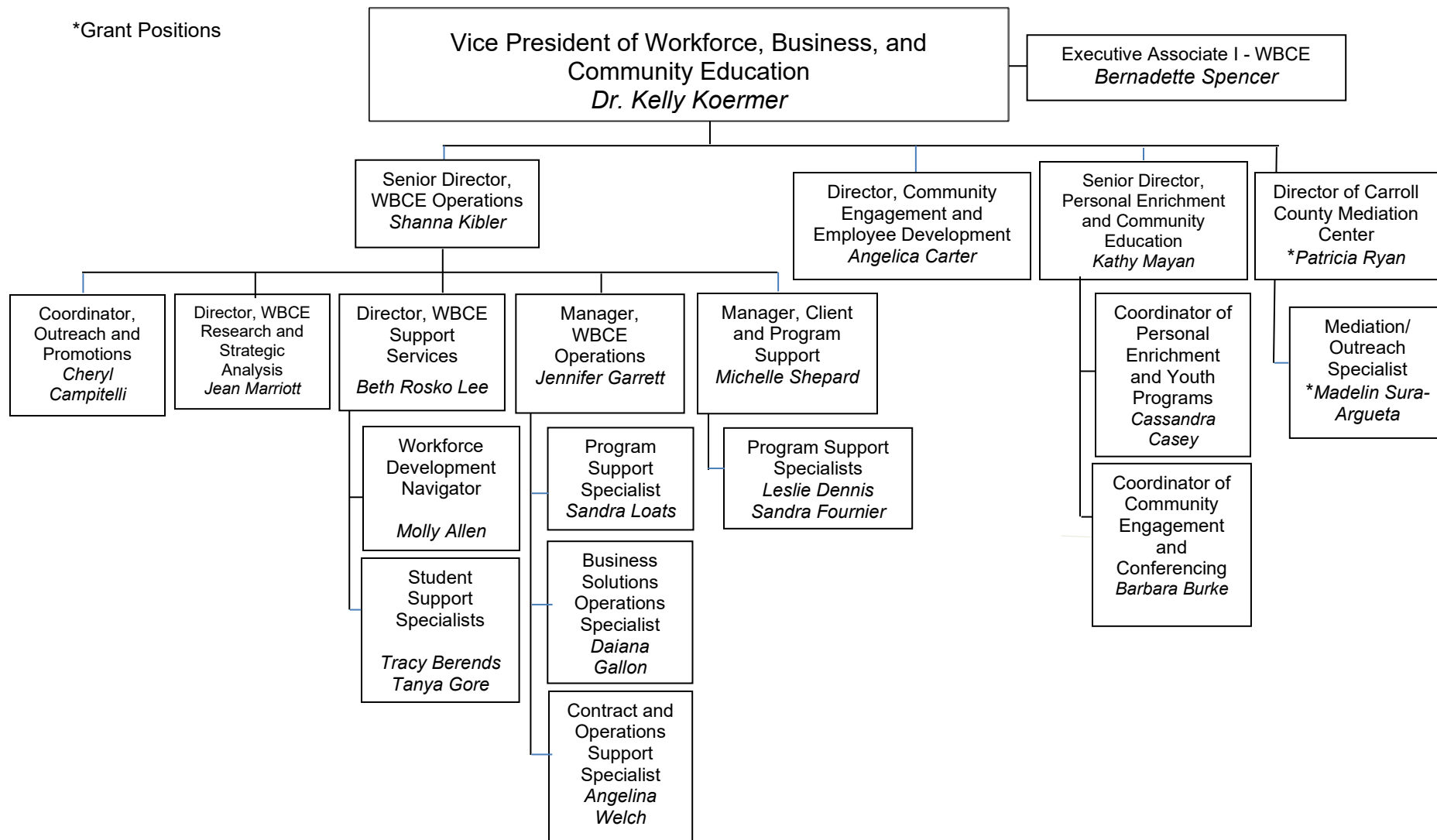


EFFECTIVENESS, INTEGRITY, AND ACCOUNTABILITY



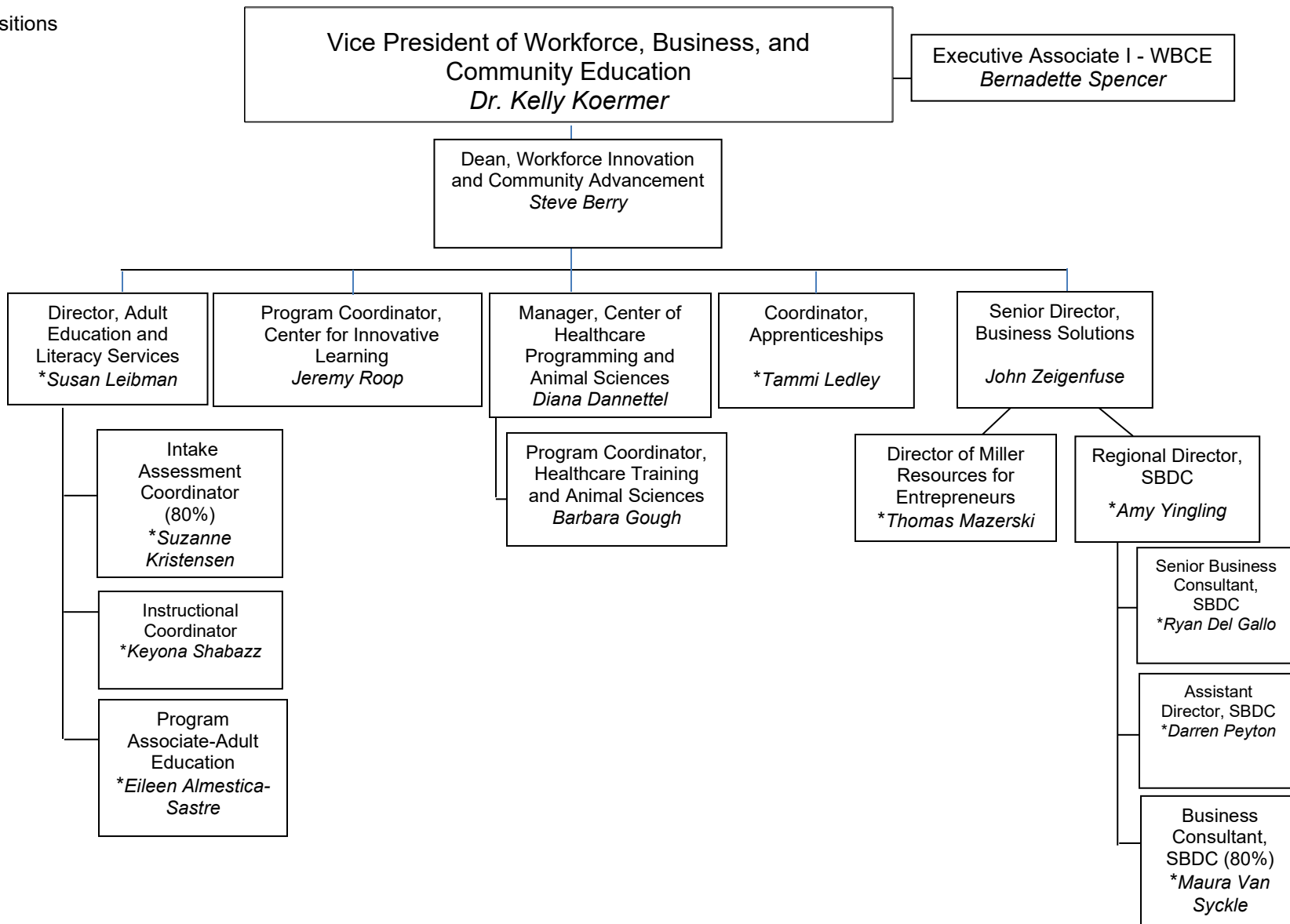
WORKFORCE, BUSINESS, AND COMMUNITY EDUCATION

*Grant Positions

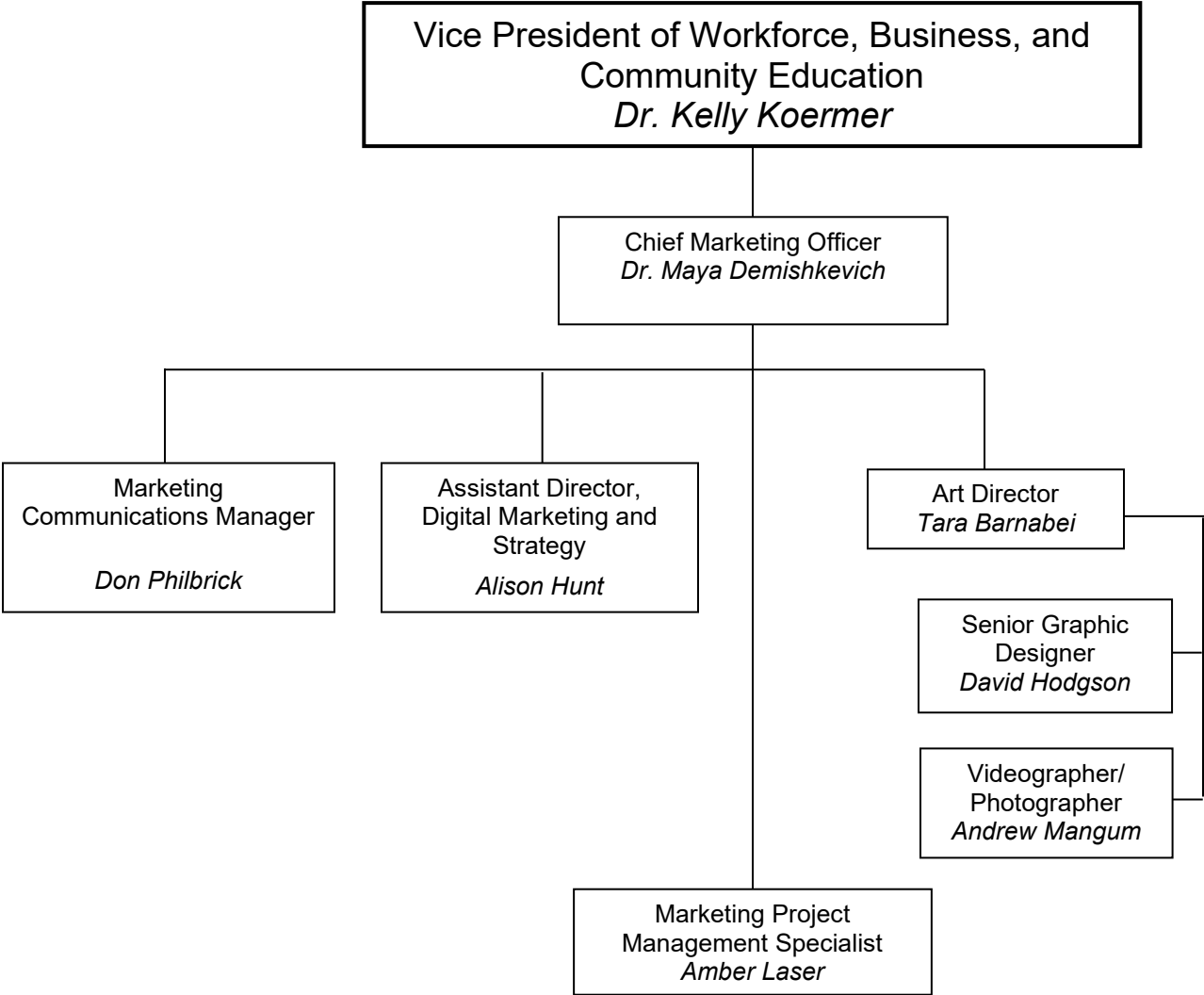


WORKFORCE, BUSINESS, AND COMMUNITY EDUCATION

* Grant Positions

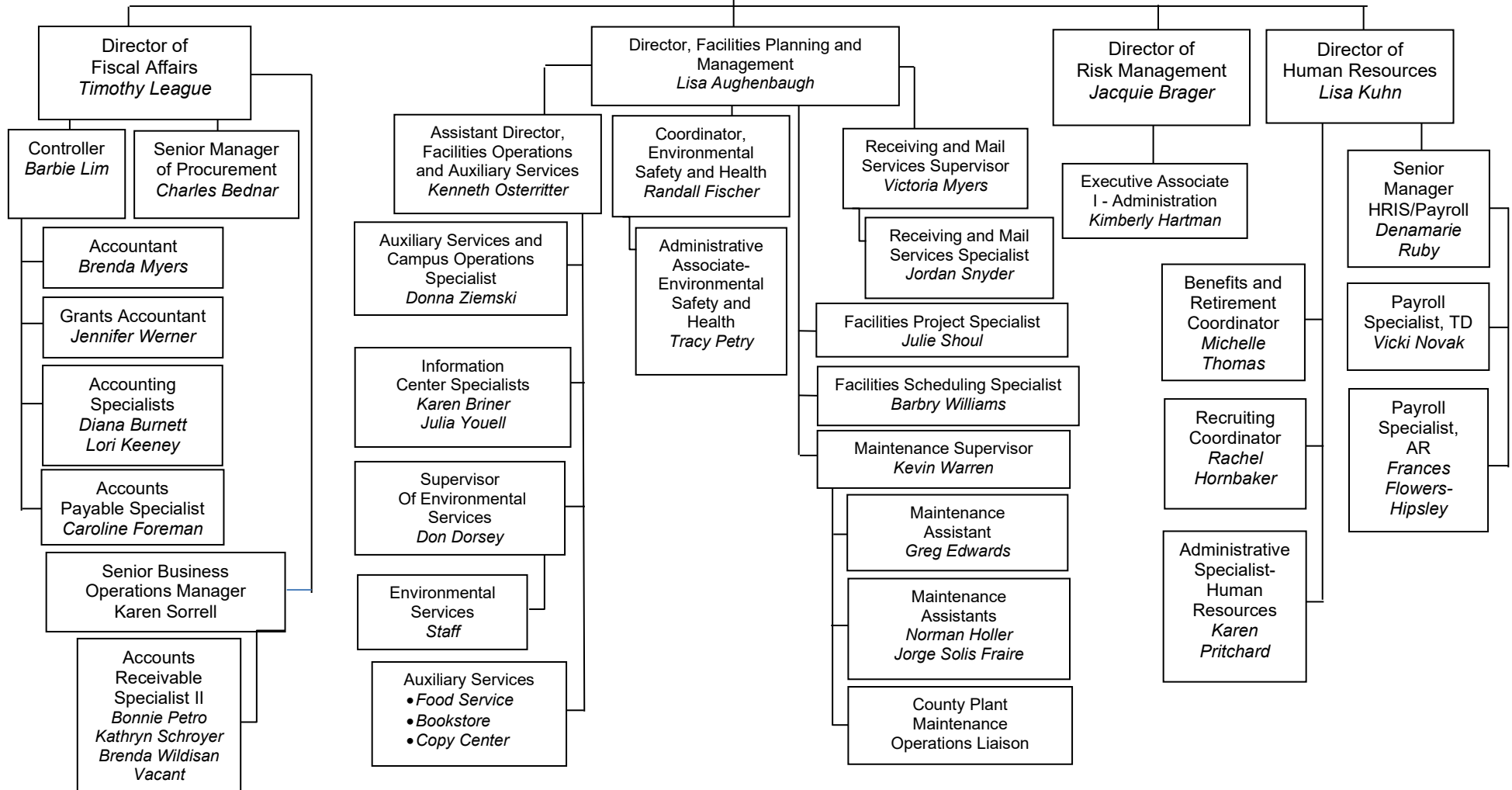


**WORKFORCE, BUSINESS, AND COMMUNITY EDUCATION
STRATEGIC MARKETING AND BRAND MANAGEMENT**

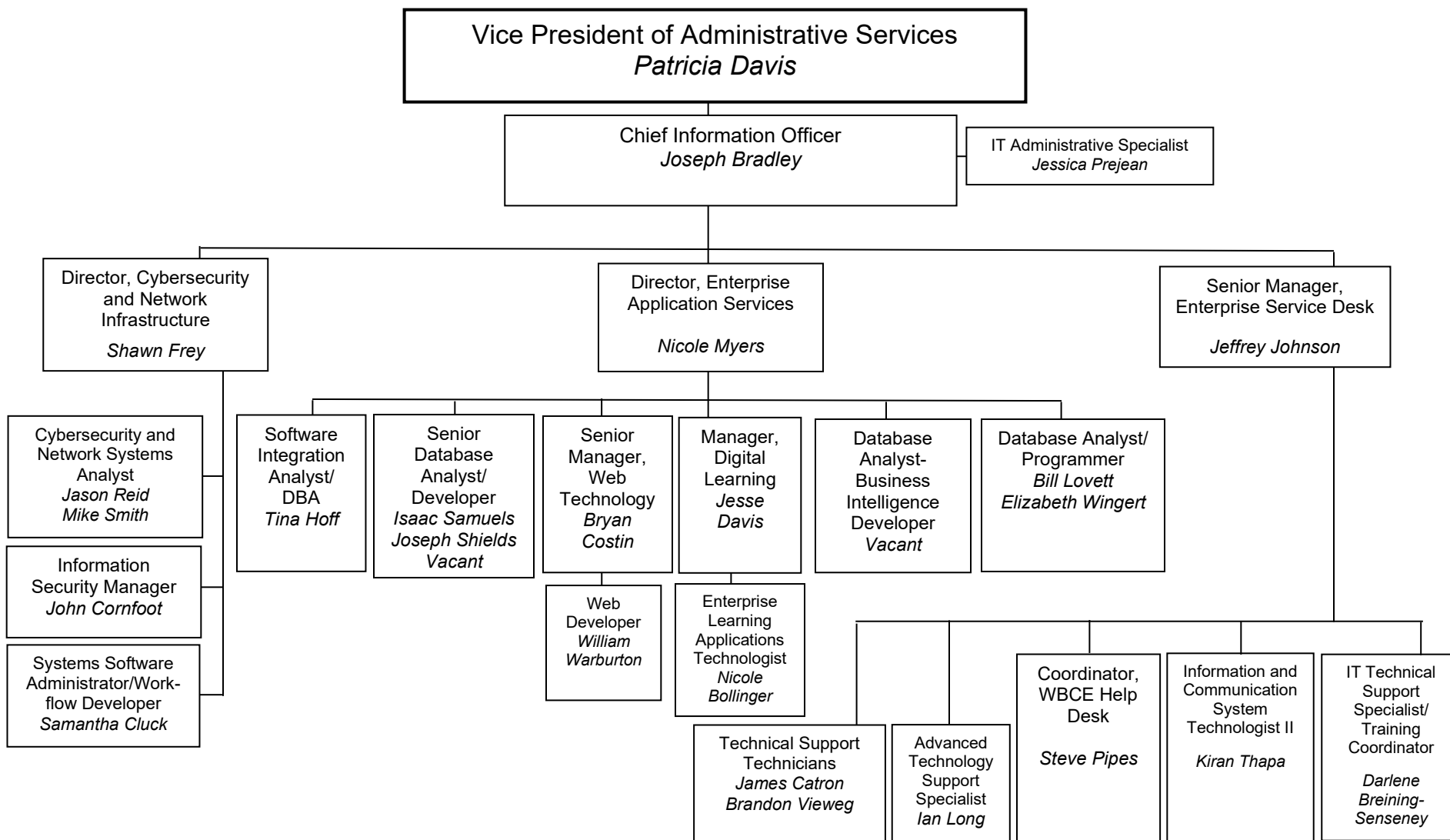


ADMINISTRATION FISCAL AFFAIRS, FACILITIES, RISK MANAGEMENT, HUMAN RESOURCES

Vice President of Administrative Services
Patricia Davis



ADMINISTRATION: NETWORK AND TECHNOLOGY SERVICES



ADMINISTRATION: ENVIRONMENTAL SERVICES

